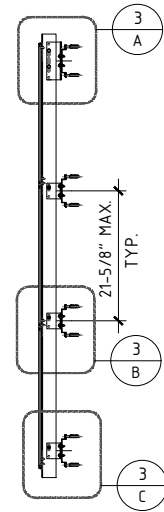
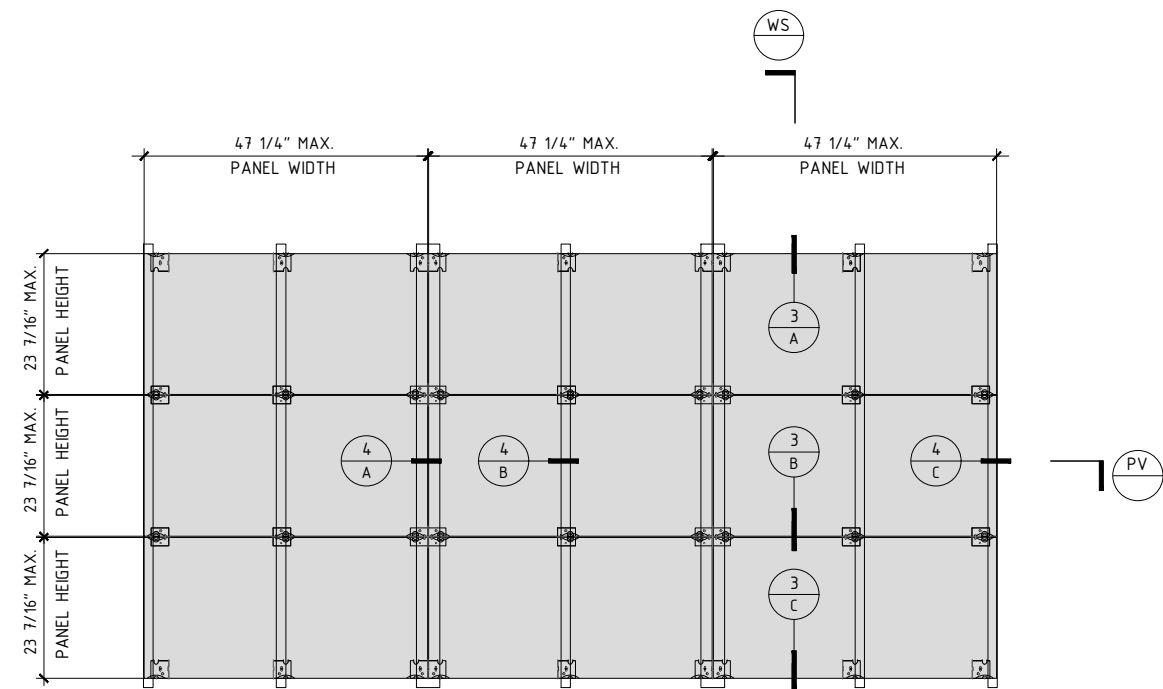


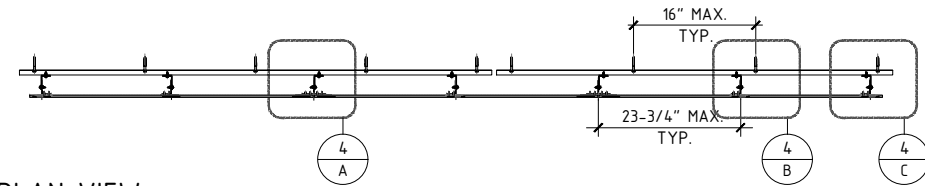
SUBSTRUCTURE LAYOUT



WALL
SECTION



PANEL LAYOUT



PLAN VIEW

TYPICAL ELEVATION

INSTALLATIONS AT MASONRY/CONC STRUCTURES
SEE SHEETS 3 AND 4 FOR INSTALLATION DETAILS

PORCELAIN PANEL, BY PORCELANOSA GRUPO
RAINSREEN VENTILATED FACADE SYSTEM

PORCELAIN PANELS ANCHORED TO SHEAR WALLS AS
EXTERIOR CLADDING.

APPROVAL APPLIES TO MULTIPLE UNIT INSTALLATIONS

MAX. DESIGN LOAD = + 80 PSF
- 80 PSF

MIN. PANEL THICKNESS = 7/16 IN.
MAX. PANEL SIZE= 23-7/16" HIGH X 47-1/4" WIDE

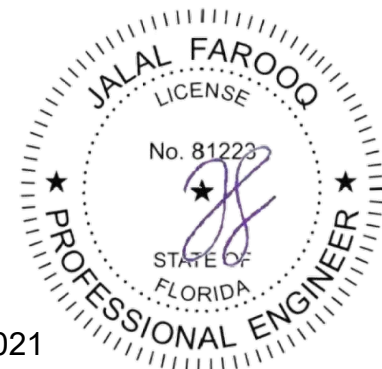
THIS PRODUCT HAS BEEN DESIGNED AND TESTED TO COMPLY WITH THE
REQUIREMENTS OF THE 2020 (7TH EDITION) FLORIDA BUILDING CODE INCLUDING HIGH
VELOCITY HURRICANE ZONE (HVHZ).

ANCHORS SHALL BE ANCHORS SHALL BE AS LISTED, SPACED AS SHOWN ON
DETAILS, ANCHORS EMBEDMENT TO BASE MATERIAL SHALL BE BEYOND WALL
DRESSING OR STUCCO.

MATERIALS INCLUDING BUT NOT LIMITED TO STEEL/METAL SCREWS, THAT COME INTO
CONTACT WITH OTHER DISSIMILAR MATERIALS SHALL MEET THE REQUIREMENTS OF
THE 2020 FLORIDA BUILDING CODE.

THIS PRODUCT APPROVAL IS GENERIC AND DOES NOT PROVIDE INFORMATION FOR A
SITE SPECIFIC PROJECT, i.e. LIFE SAFETY OF THIS PRODUCT, ADEQUACY OF
STRUCTURE RECEIVING THIS PRODUCT AND SEALING AROUND OPENING FOR WATER
INFILTRATION RESISTANCE ETC. CONDITIONS NOT SHOWN IN THIS DRAWING ARE TO
BE ANALYZED SEPARATELY, AND TO BE REVIEWED BY BUILDING OFFICIAL.

- A- THIS PRODUCT EVALUATION DOCUMENT (P.E.D.) PREPARED BY THIS ENGINEER IS
GENERIC AND DOES NOT PROVIDE INFORMATION FOR A SITE SPECIFIC PROJECT; i.e.
WHERE THE SITE CONDITIONS DEVIATE FROM THE P.E.D.
- B- CONTRACTOR TO BE RESPONSIBLE FOR THE SELECTION, PURCHASE AND INSTALLATION
OF THIS PRODUCT BASED ON THIS PRODUCT EVALUATION PROVIDED HE/SHE DOES NOT
DEVIATE FROM THE CONDITIONS DETAILED ON THIS DOCUMENT.
- C- THIS PRODUCT EVALUATION DOCUMENT WILL BE CONSIDERED INVALID IF ALTERED BY
ANY MEANS.
- D- SITE SPECIFIC PROJECTS SHALL BE PREPARED BY A FLORIDA REGISTERED ENGINEER OR
ARCHITECT WHICH WILL BECOME THE ENGINEER OF RECORD (E.O.R.) FOR THE PROJECT
AND WHO WILL BE RESPONSIBLE FOR THE PROPER USE OF THE P.E.D. ENGINEER OF
RECORD, ACTING AS A DELEGATED ENGINEER TO THE P.E.D. ENGINEER SHALL SUBMIT
TO THIS LATTER THE SITE SPECIFIC DRAWINGS FOR REVIEW.
- E- THIS P.E.D. SHALL BEAR THE DATE AND ORIGINAL SEAL AND SIGNATURE OF THE
PROFESSIONAL ENGINEER OF RECORD THAT PREPARED IT.



Sealed: 6/10/2021

AL-FAROOQ CORPORATION
ENGINEERS & PRODUCT DEVELOPMENT
9360 SUNSET DRIVE, SUITE 220
MIAMI, FLORIDA 33173
TEL. (305) 264-8100 FAX. (305) 262-6978

af c
RAINSREEN VENTILATED FACADE SYSTEM (N.I.)

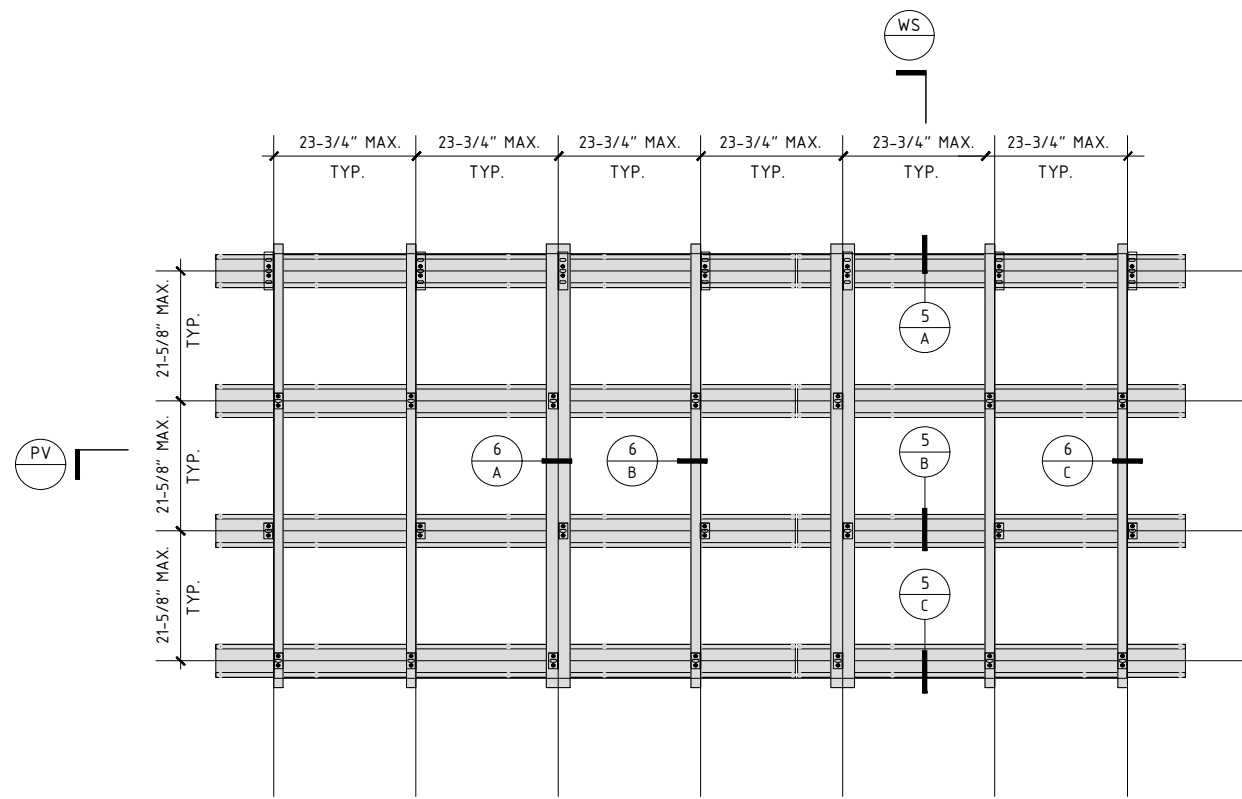
PORCELANOSA
8700 N.W. 13th Terrace
Miami, FL 33172
TEL. (305) 715-7153 FAX. (305) 715-9635

RAINSREEN VENTILATED FACADE SYSTEM (N.I.)

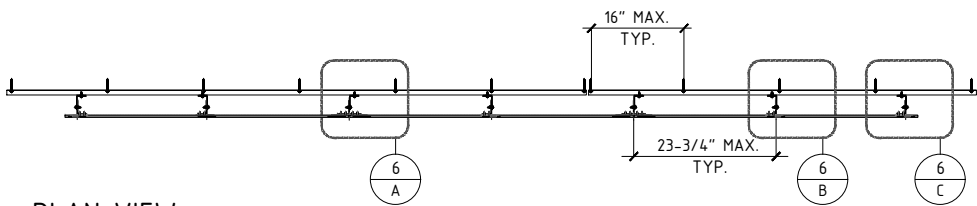
revisions:	no	date	by	description
	A	2/10/20		UPDATED TO 2020 FBC

date: 12-01-16
scale: 3/8"=1'-0"
dr. by: JCS
chk. by:

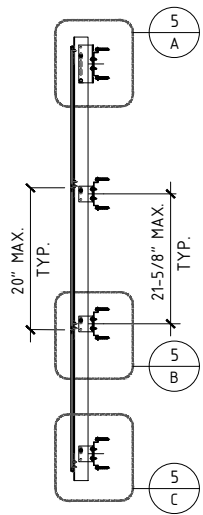
drawing no.
17-0153
sheet 1 of 7



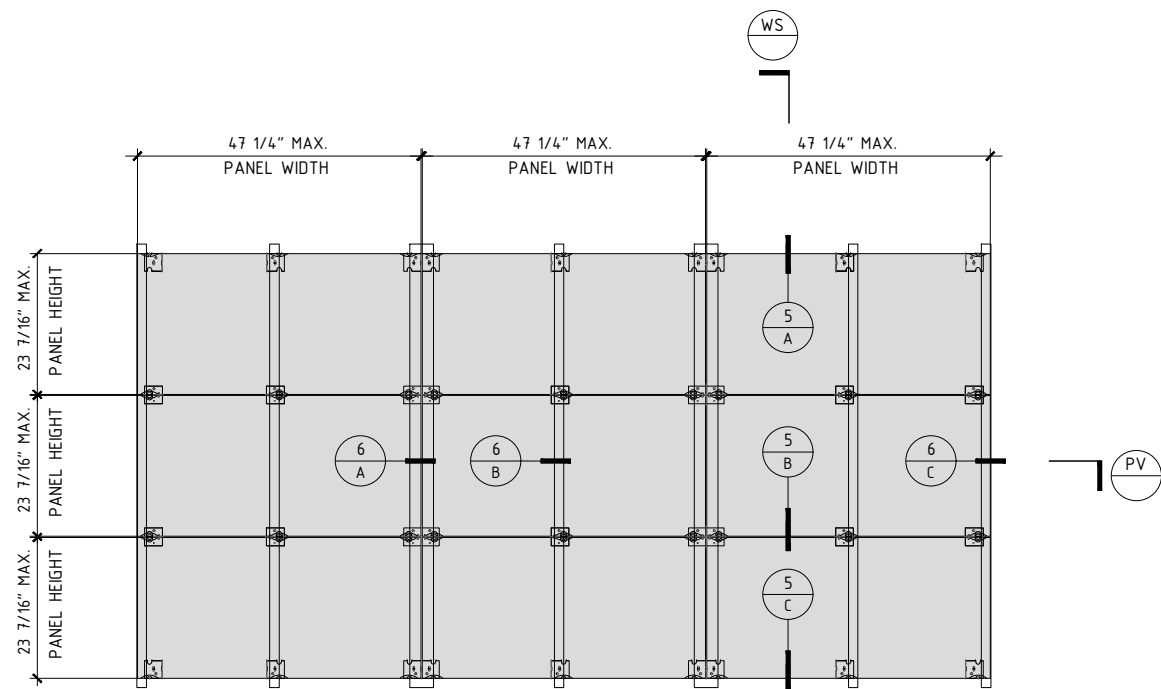
SUBSTRUCTURE LAYOUT



PLAN VIEW



WALL
SECTION

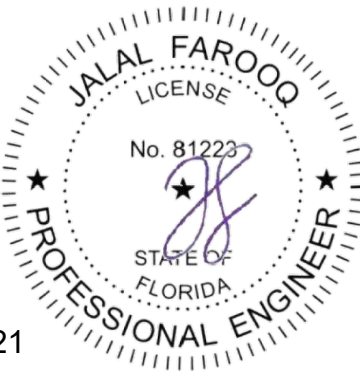


PANEL LAYOUT

TYPICAL ELEVATION

INSTALLATIONS AT STEEL/WOOD STUD FRAMING SYSTEM
SEE SHEETS 5 AND 6 FOR INSTALLATION DETAILS

RAINSCREEN SYSTEM INSTALLED IN FRONT OF 19/32\"/>



Sealed: 6/10/2021

AL-FAROOQ CORPORATION
ENGINEERS & PRODUCT DEVELOPMENT
9360 SUNSET DRIVE, SUITE 220
MIAMI, FLORIDA 33173
TEL. (305) 264-8100 FAX. (305) 262-6978

RAINSCREEN VENTILATED FACADE SYSTEM (N.I.)

PORCELANOSA
8700 N.W. 13th Terrace
Miami, FL 33172
TEL. (305) 715-7153 FAX. (305) 715-9635

revisions:		description	
no	date	by	
A	2/10/09		UPDATED TO 2020 FBC

date: 12-01-16

scale: 3/8"=1'-0"

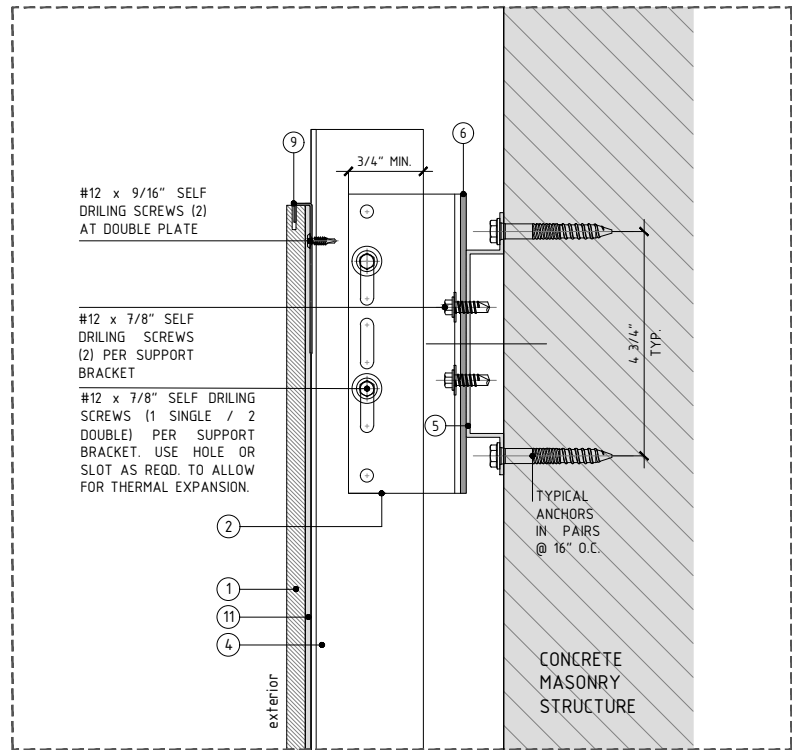
dr. by: JCS

chk. by:

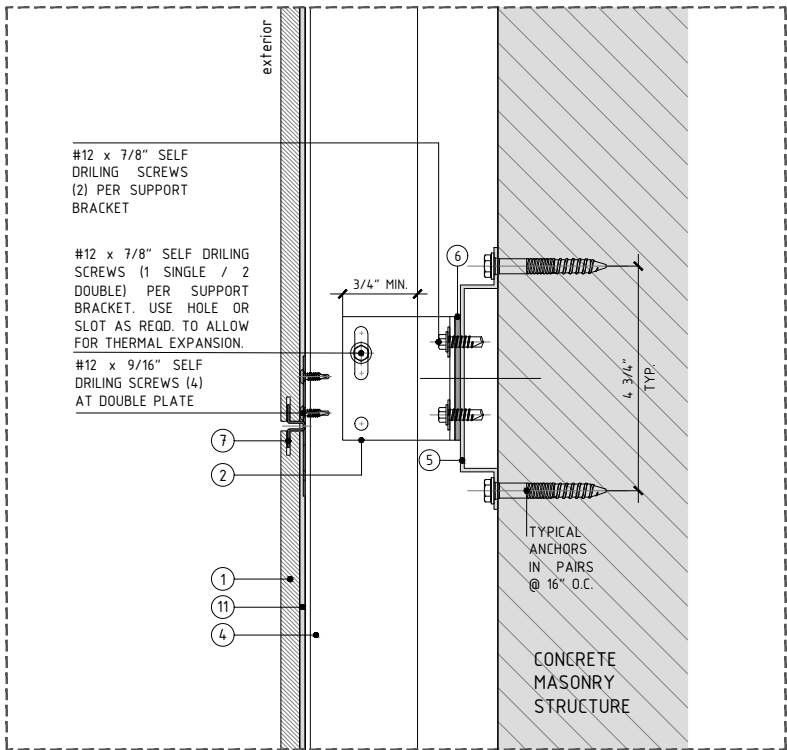
drawing no.
17-0153

sheet 2 of 7

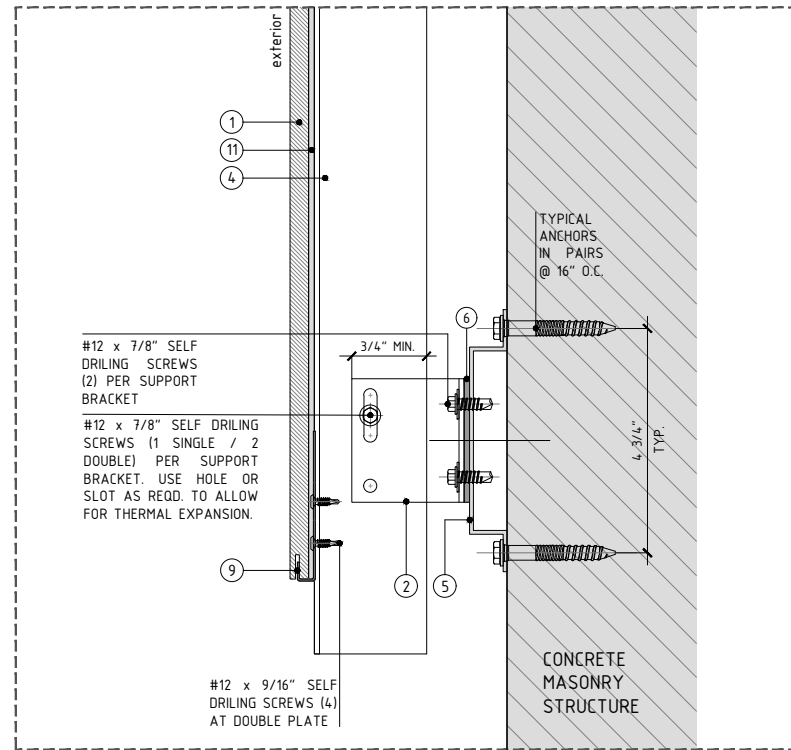
INSTALLATIONS AT MASONRY/CONC STRUCTURES



DETAIL A - TYPICAL VERTICAL DETAIL @ TOP ENDING



DETAIL B - TYPICAL VERTICAL DETAIL

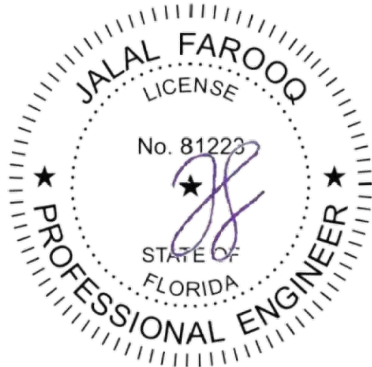


DETAIL C - TYPICAL VERTICAL DETAIL @ BOTTOM ENDING

LEGEND

- | | |
|---|-----------------------------------|
| 1. PORCELAIN PANEL BY PORCELANOSA GRUPO | 6. SINGLE/DOUBLE THERMAL ISOLATOR |
| 2. ALUMINUM SUPPORT BRACKET (SINGLE/DOUBLE)* | 7. CENTRAL FIXING PLATE |
| 3. POWDER COATED (BLACK) ALUMINUM L-PROFILE, 40x60x2.7MM (1 5/16" x 2 3/8" x 1/8"), 3M (118 3/8") LONG | 8. LATERAL FIXING PLATE |
| 4. POWDER COATED (BLACK) ALUMINUM T-PROFILE, 100x60x2.7MM (3 15/16" x 2 3/8" x 1/8"), 3M (118 3/8") LONG | 9. START/END FIXING PLATE |
| 5. ALUMINUM OMEGA PROFILE 20x140MM (1 3/16" x 5 1/2"); 3M(118 3/8") LONG | 10. START/END HALF FIXING PLATE |
| | 11. P-404 WHITE POLYURETHENE |
| * NOTE 1
IF A GREATER SIZE SUPPORT BRACKET IS NEEDED IT HAS TO BE CALCULATED BY THE ENGINEER OF RECORD ON A PROJECT BY PROJECT BASIS | |

Sealed: 6/10/2021



TYPICAL ANCHORS:

1/4" DIA. ULTRACON BY "DEWALT"(Fu=164 KSI, Fy=148 KSI)

DIRECTLY INTO CONCRETE OR MASONRY
1-1/4" MIN. EMBED INTO CONCRETE OR MASONRY
2-1/2" MIN. EDGE DISTANCE INTO CONCRETE
4" MIN. EDGE DISTANCE INTO MASONRY

CONCRETE f'c = 3000 PSI MIN.
C-90 HOLLOW/FILLED BLOCKS f'm = 2000 PSI MIN.

afc

AL-FAROOQ CORPORATION
ENGINEERS & PRODUCT DEVELOPMENT
9360 SUNSET DRIVE, SUITE 220
MIAMI, FLORIDA 33173
TEL. (305) 264-8100 FAX. (305) 262-6978
(C.A.N. 3538)

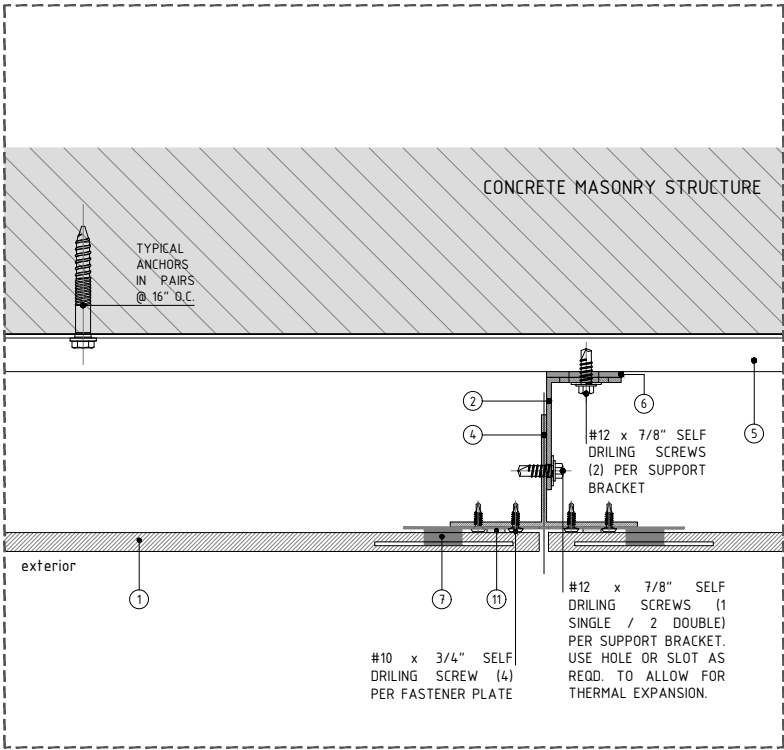
RAINSREEN VENTILATED FACADE SYSTEM (N.I.)

PORCELANOSA
8700 N.W. 13th Terrace
Miami, FL 33172
TEL. (305) 715-7153 FAX. (305) 715-9635

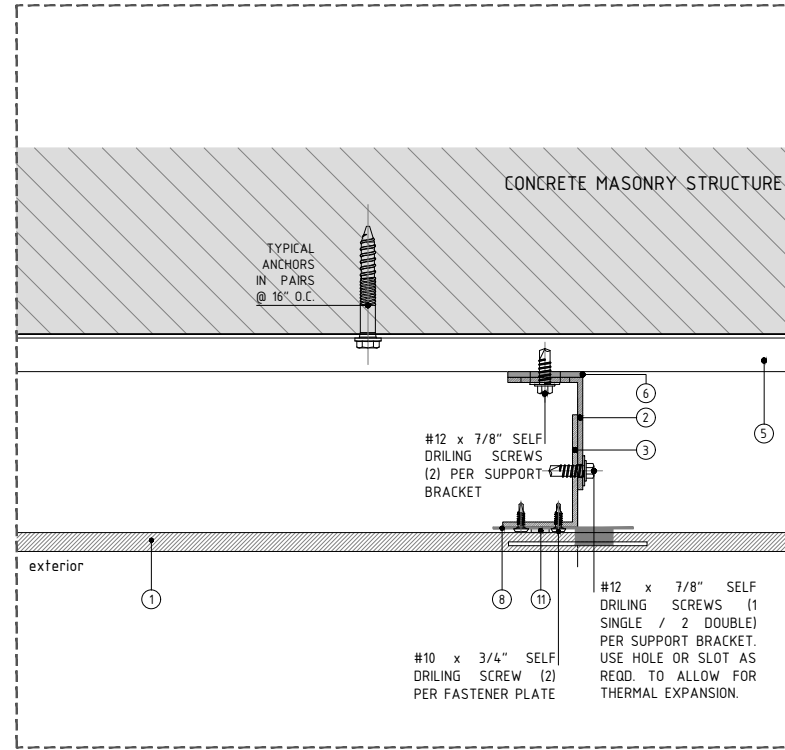
revisions:		no	date	by	description
		A	2/10/09		UPDATED TO 2020 FBC
date:	12-01-16	scale:	3" = 1"	dr. by:	JCS
chk. by:					
drawing no.					
17-0153					
sheet 3 of 7					

RAINSREEN16-09PLA

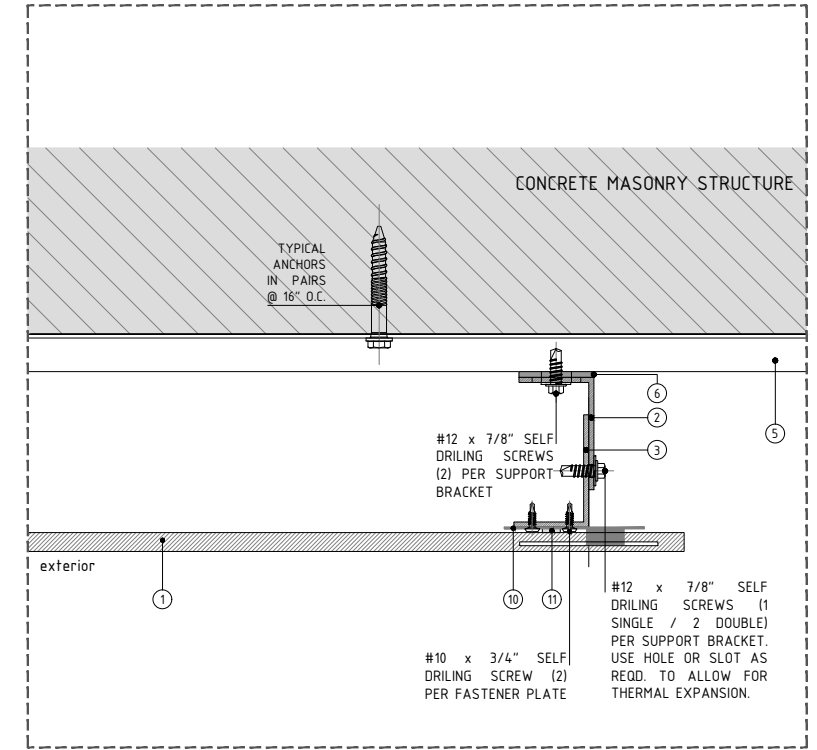
INSTALLATIONS AT MASONRY/CONC STRUCTURES



DETAIL A - TYPICAL HORIZONTAL DETAIL



DETAIL B - TYPICAL HORIZONTAL DETAIL



DETAIL C - TYPICAL ENDING HORIZONTAL DETAIL

LEGEND

- | | |
|--|-----------------------------------|
| 1. PORCELAIN PANEL BY PORCELANOSA GRUPO | 6. SINGLE/DOUBLE THERMAL ISOLATOR |
| 2. ALUMINUM SUPPORT BRACKET (SINGLE/DOUBLE)* | 7. CENTRAL FIXING PLATE |
| 3. POWDER COATED (BLACK) ALUMINUM L-PROFILE, 40x60x2.7MM (1 ⁵ / ₁₆ "x2 ³ / ₈ "x ¹ / ₈ "), 3M (118 ³ / ₈ ") LONG | 8. LATERAL FIXING PLATE |
| 4. POWDER COATED (BLACK) ALUMINUM T-PROFILE, 100x60x2.7MM (3 ¹⁵ / ₁₆ "x2 ³ / ₈ "x ¹ / ₈ "), 3M (118 ³ / ₈ ") LONG | 9. START/END FIXING PLATE |
| 5. ALUMINUM OMEGA PROFILE 20x140MM (1 ³ / ₁₆ "x5 ¹ / ₂ "); 3M(118 ³ / ₈ ") LONG | 10. START/END HALF FIXING PLATE |
| | 11. P-404 WHITE POLYURETHENE |
- * NOTE 1
IF A GREATER SIZE SUPPORT BRACKET IS NEEDED IT HAS TO BE CALCULATED BY THE ENGINEER OF RECORD ON A PROJECT BY PROJECT BASIS

TYPICAL ANCHORS:

1/4" DIA. ULTRA CON BY "DEWALT"(Fu=164 KSI, Fy=148 KSI)

DIRECTLY INTO CONCRETE OR MASONRY
1-1/4" MIN. EMBED INTO CONCRETE OR MASONRY
2-1/2" MIN. EDGE DISTANCE INTO CONCRETE
4" MIN. EDGE DISTANCE INTO MASONRY

CONCRETE f'c = 3000 PSI MIN.
C-90 HOLLOW/FILLED BLOCKS f'm = 2000 PSI MIN.

Sealed: 6/10/2021



af c
AL-FAROOQ CORPORATION
ENGINEERS & PRODUCT DEVELOPMENT
9360 SUNSET DRIVE, SUITE 220
MIAMI, FLORIDA 33173
TEL. (305) 264-8100 FAX. (305) 262-6978

RAINSREEN VENTILATED FACADE SYSTEM (N.I.)

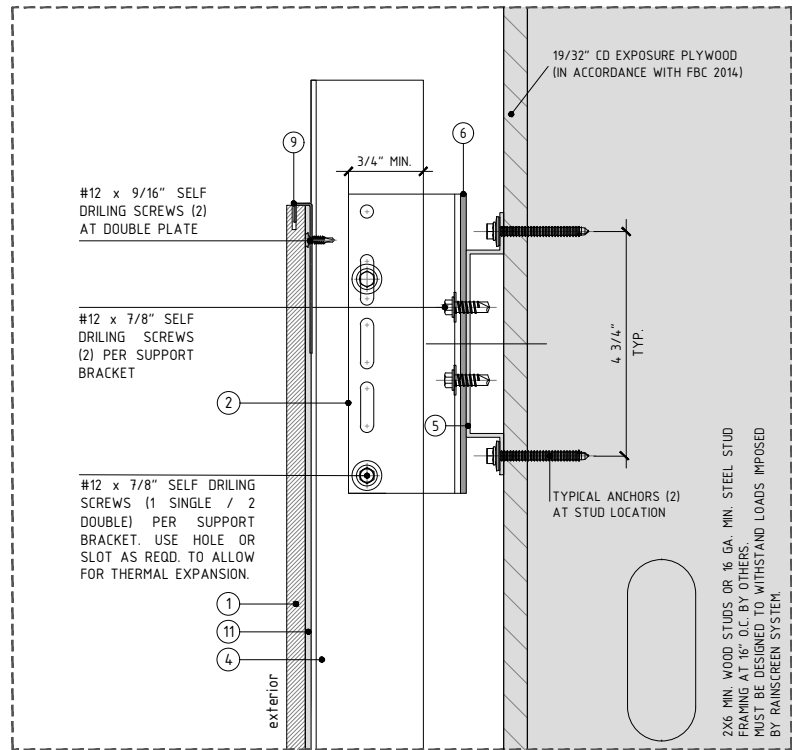
PORCELANOSA
8700 N.W. 13th Terrace
Miami, FL 33172
TEL. (305) 715-7153 FAX. (305) 715-9635

revisions:	no	date	by	description
	A	2/10/09		UPDATED TO 2020 FBC

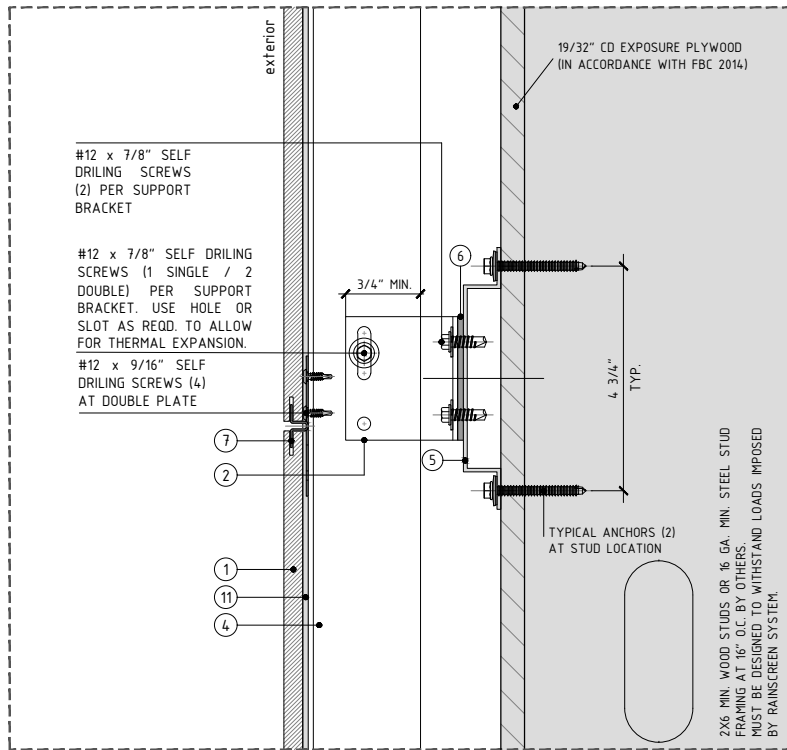
date:	12-01-16
scale:	3" = 1"
dr. by:	JCS
chk. by:	

drawing no.
17-0153
sheet 4 of 7

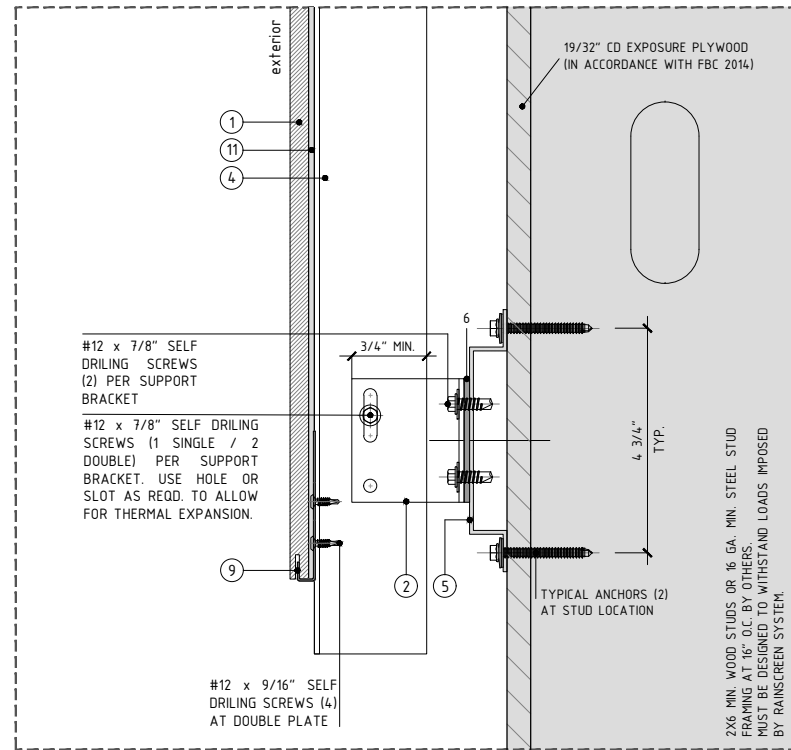
INSTALLATIONS AT STEEL/WOOD STUD FRAMING SYSTEM



DETAIL A - TYPICAL VERTICAL DETAIL @ TOP ENDING



DETAIL B - TYPICAL VERTICAL DETAIL

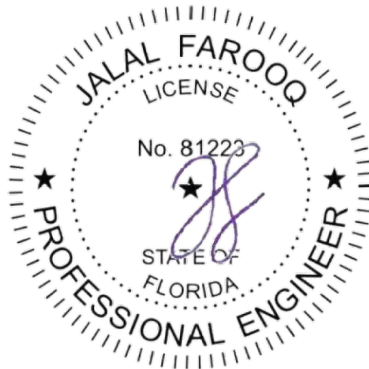


DETAIL C - TYPICAL VERTICAL DETAIL @ BOTTOM ENDING

LEGEND

- | | |
|--|-----------------------------------|
| 1. PORCELAIN PANEL BY PORCELANOSA GRUPO | 6. SINGLE/DOUBLE THERMAL ISOLATOR |
| 2. ALUMINUM SUPPORT BRACKET (SINGLE/DOUBLE)* | 7. CENTRAL FIXING PLATE |
| 3. POWDER COATED (BLACK) ALUMINUM L-PROFILE, 40x60x2.7MM (1 3/16" x 2 3/8" x 1/8"), 3M (118 3/8") LONG | 8. LATERAL FIXING PLATE |
| 4. POWDER COATED (BLACK) ALUMINUM T-PROFILE, 100x60x2.7MM (3 15/16" x 2 3/8" x 1/8"), 3M (118 3/8") LONG | 9. START/END FIXING PLATE |
| 5. ALUMINUM OMEGA PROFILE 20x140MM (1 3/16" x 5 1/2"), 3M (118 3/8") LONG | 10. START/END HALF FIXING PLATE |
| | 11. P-404 WHITE POLYURETHENE |
- * NOTE 1
IF A GREATER SIZE SUPPORT BRACKET IS NEEDED IT HAS TO BE CALCULATED BY THE ENGINEER OF RECORD ON A PROJECT BY PROJECT BASIS

Sealed: 6/10/2021



TYPICAL ANCHORS:

1/4" DIA. X 2" S-MD53S SS
SELF DRILLING SCREWS WITH WASHER BY 'HILTI'

INTO 16 GA. MIN. METAL STUDS
1/2" MIN. EDGE DISTANCE

1/4" DIA. ULTRACON BY 'DEWALT' (Fu=164 KSI, Fy=148 KSI)

INTO 2X6 MIN. WOOD STUDS
1-1/4" MIN. PENETRATION INTO WOOD
1" MIN. EDGE DISTANCE
WOOD S.G. = 0.55 MIN.

afC

AL-FAROOQ CORPORATION
ENGINEERS & PRODUCT DEVELOPMENT
9360 SUNSET DRIVE, SUITE 220
MIAMI, FLORIDA 33173
TEL. (305) 264-8100 FAX. (305) 262-6978
(C.A.N. 3538)

RAINSREEN16-09PLA

RAINSREEN VENTILATED FACADE SYSTEM (N.I.)

PORCELANOSA
8700 N.W. 13th Terrace
Miami, FL 33172
TEL. (305) 715-7153 FAX. (305) 715-9635

revisions:	no	date	by	description
	A	2/10/20		UPDATED TO 2020 FBC

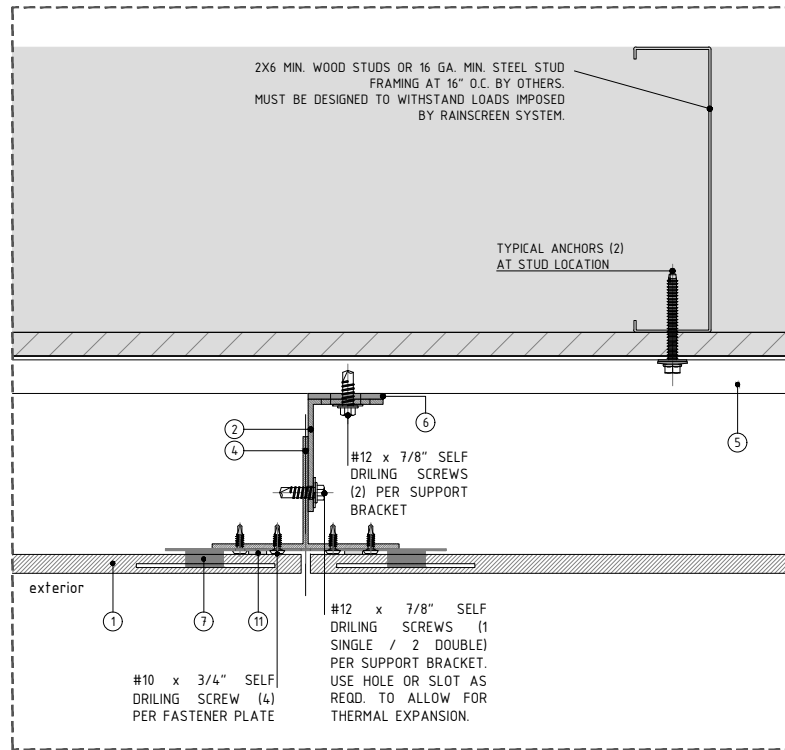
date:	12-01-16
scale:	3" = 1"
dr. by:	JCS
chk. by:	

drawing no.

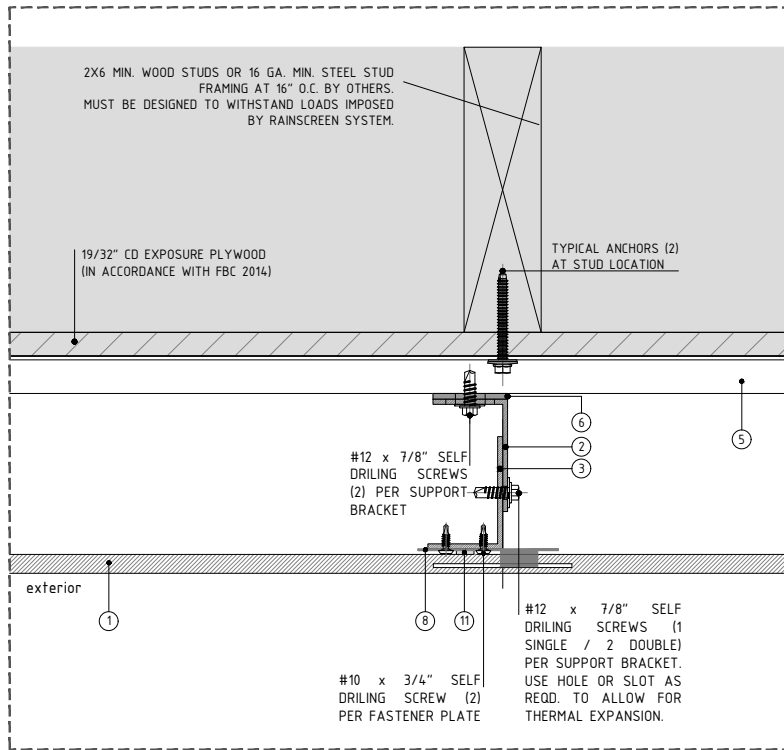
17-0153

sheet 5 of 7

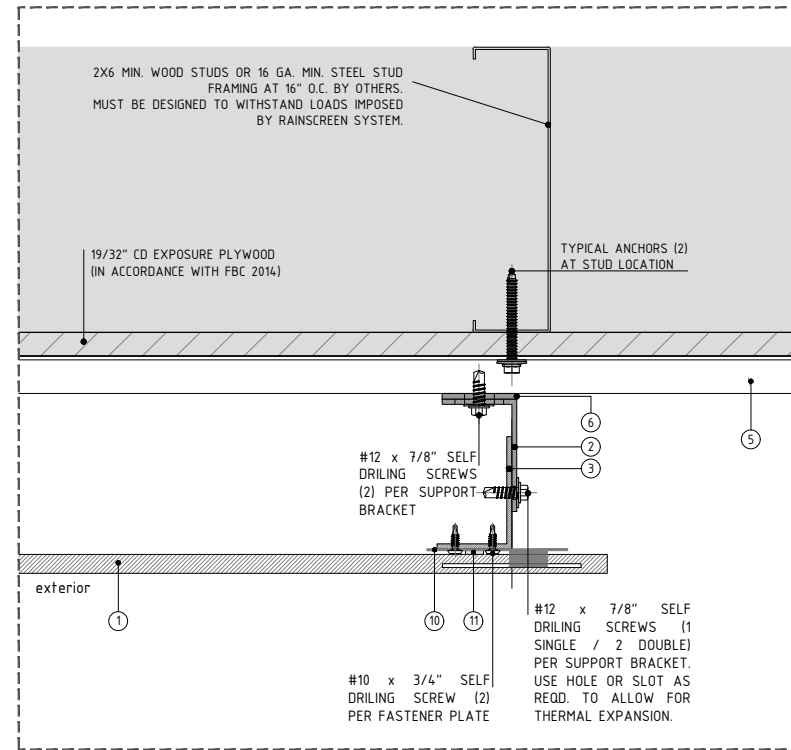
INSTALLATIONS AT STEEL/WOOD STUD FRAMING SYSTEM



DETAIL A - TYPICAL HORIZONTAL DETAIL



DETAIL B - TYPICAL HORIZONTAL DETAIL

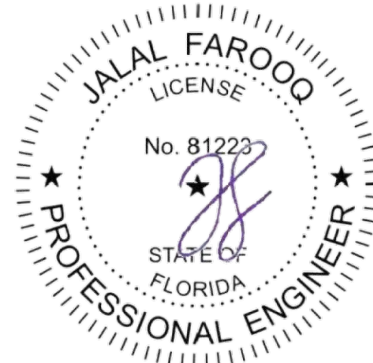


DETAIL C - TYPICAL ENDING HORIZONTAL DETAIL

LEGEND

- | | |
|---|-----------------------------------|
| 1. PORCELAIN PANEL BY PORCELANOSA GRUPO | 6. SINGLE/DOUBLE THERMAL ISOLATOR |
| 2. ALUMINUM SUPPORT BRACKET (SINGLE/DOUBLE)* | 7. CENTRAL FIXING PLATE |
| 3. POWDER COATED (BLACK) ALUMINUM L-PROFILE, 40x60x2.7MM (1 ⁵ / ₁₆ "x2 ³ / ₈ "x ¹ / ₈ "), 3M (118 ³ / ₈ ") LONG | 8. LATERAL FIXING PLATE |
| 4. POWDER COATED (BLACK) ALUMINUM T-PROFILE, 100x60x2.7MM (3 ¹⁵ / ₁₆ "x2 ³ / ₈ "x ¹ / ₈ "), 3M (118 ³ / ₈ ") LONG | 9. START/END FIXING PLATE |
| 5. ALUMINUM OMEGA PROFILE 20x140MM (1 ³ / ₁₆ "x5 ¹ / ₂ "); 3M(118 ³ / ₈ ") LONG | 10. START/END HALF FIXING PLATE |
| | 11. P-404 WHITE POLYURETHENE |
| * NOTE 1
IF A GREATER SIZE SUPPORT BRACKET IS NEEDED IT HAS TO BE CALCULATED BY THE ENGINEER OF RECORD ON A PROJECT BY PROJECT BASIS | |

Sealed: 6/10/2021



TYPICAL ANCHORS:

1/4" DIA. X 2" S-MD53S SS
SELF DRILLING SCREWS WITH WASHER BY 'HILTI'

INTO 16 GA. MIN. METAL STUDS
1/2" MIN. EDGE DISTANCE

1/4" DIA. ULTRACON BY 'DEWALT' (Fu=164 KSI, Fy=148 KSI)

INTO 2X6 MIN. WOOD STUDS
1-1/4" MIN. PENETRATION INTO WOOD
1" MIN. EDGE DISTANCE
WOOD S.G. = 0.55 MIN.

afc

AL-FAROOQ CORPORATION
ENGINEERS & PRODUCT DEVELOPMENT
9360 SUNSET DRIVE, SUITE 220
MIAMI, FLORIDA 33173
TEL. (305) 264-8100 FAX. (305) 262-6978
(C.A.N. 3538)

RAINSREEN16-09PLA

RAINSREEN VENTILATED FACADE SYSTEM (N.I.)

PORCELANOSA
8700 N.W. 13th Terrace
Miami, FL 33172
TEL. (305) 715-7153

FAX. (305) 715-9635

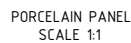
revisions:	no	date	by	description
	A	2/10/2019		UPDATED TO 2020 FBC

date:	12-01-16
scale:	3" = 1"
dr. by:	JCS
chk. by:	

drawing no.

17-0153

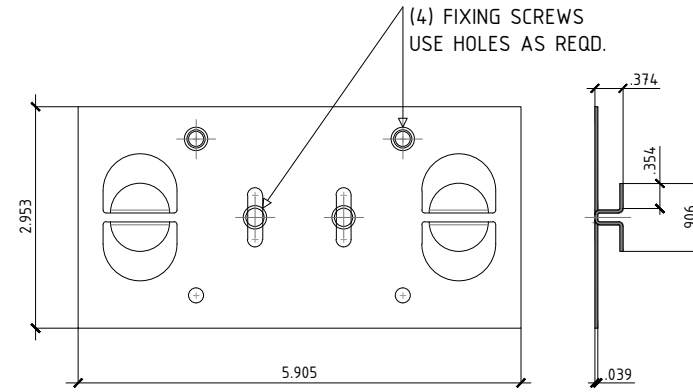
sheet 6 of 7



23.438

Technical drawing of a stepped shaft. The total length is 5.512 inches. The shaft has a central section with a diameter of 0.79 inches and a length of 3.937 inches. The two end sections have a diameter of 0.787 inches. The top step has a height of 0.787 inches, and the bottom step has a height of 0.787 inches.

ITEM NO.	WEIGHT	QUANTITY	DESCRIPTION	MATERIAL	MANF./SUPPLIER/REMARKS
1	5 Lbs/Sq. Ft.	AS REQD.	PORCELAIN PANEL	PORCELAIN	-
2	-	AS REQD.	SUPPORT BRACKET	6005A-T6	-
3	-	AS REQD.	L-PROFILE	6063-T6	-
4	-	AS REQD.	T-PROFILE	6063-T6	-
5	-	AS REQD.	OMEGA PROFILE	6063-T6	-
6	-	AS REQD.	SINGLE/DOUBLE THERMAL ISOLATOR	PLASTIC	-
7	-	AS REQD.	CENTRAL FIXING PLATE	ST. STEEL	-
8	-	AS REQD.	LATERAL FIXING PLATE	ST. STEEL	-
9	-	AS REQD.	START END FIXING PLATE	ST. STEEL	-
10	-	AS REQD.	START/END HALF FIXING PLATE	ST. STEEL	-
11	-	AS REQD.	P-404 WHITE POLYURETHENE	SILICONE	-



Technical drawing of a rectangular plate with dimensions and assembly notes:

- Overall dimensions: 2.953 (width) x 2.953 (height).
- Assembly note: (2) FIXING SCREWS USE HOLES AS REQD.
- Dimensions for the fixing screw holes: .374 (width) x .354 (height).
- Dimension for the central hole: .039 (width).
- Dimension for the central hole: .906 (height).

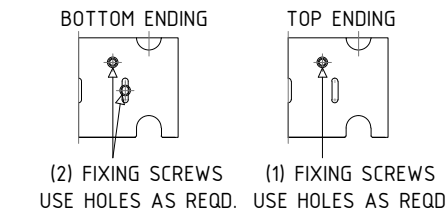
BOTTOM ENDING

(4) FIXING SCREWS
USE HOLES AS REQD.

TOP ENDING

(2) FIXING SCREWS
USE HOLES AS REQD.

The diagram illustrates the correct placement of fixing screws for the bottom and top endings of the panel. For the bottom ending, four screws are shown being driven into the panel, with a note indicating that the holes should be used as required. For the top ending, two screws are shown being driven into the panel, also with a note indicating that the holes should be used as required.



⑩ LATERAL FIXING PLATE

A circular professional engineer seal for Jalal Farooq. The outer ring contains the text "JALAL FAROOQ" at the top and "PROFESSIONAL ENGINEER" at the bottom, separated by two stars. Inside the ring, the word "LICENSE" is at the top, "No. 81223" is in the center, and "STATE OF FLORIDA" is at the bottom. A large, stylized signature is written over the license number.